

APPROVED WITH
CORRECTIONS AS NOTED
PSEG Long Island

THIS APPROVAL SHALL NOT RELIEVE
THE CONTRACTOR FROM ENTIRE
RESPONSIBILITY FOR DIMENSIONAL
ACCURACY, CONFORMANCE WITH
REFERENCED SPECIFICATIONS, CODES
AND ALL LIABILITY UNDER CONTRACT.

PER: _____
DATE: _____

LEGEND:

| | | | |
|--|--------------------------------|--|---|
| | PROPOSED CONCRETE WASHOUT | | PROPOSED OPEN CUT TRENCH |
| | PROPOSED ELECTRIC SPICE VAULT | | LIMIT OF IMPERIOUS DISTURBANCE |
| | PROPOSED SILT FENCE | | LIMIT OF PERMEABLE DISTURBANCE |
| | PROPOSED ELECTRICAL DUCTS | | LIMIT OF CLEARING + GRUBBING TREE REMOVAL (PERMANENT) |
| | ALIGNMENT | | LIMIT OF CLEARING + GRUBBING (TEMPORARY) |
| | APPROXIMATE RIGHT-OF-WAY (ROW) | | |
| | FILTER BAG (INLET PROTECTION) | | |

IT IS A VIOLATION OF THE PROFESSIONAL LICENSE LAW FOR ANY PERSON TO ALTER THIS DRAWING IN ANY WAY, UNLESS ACTING UNDER THE DIRECTION OF A LICENSED PROFESSIONAL ENGINEER. THE ALTERING CONSULTANT SHALL AFFIX THEIR SEAL AND THE NOTATION "ALTERED BY" FOLLOWED BY THEIR SIGNATURE AND DATE OF ALTERATION.

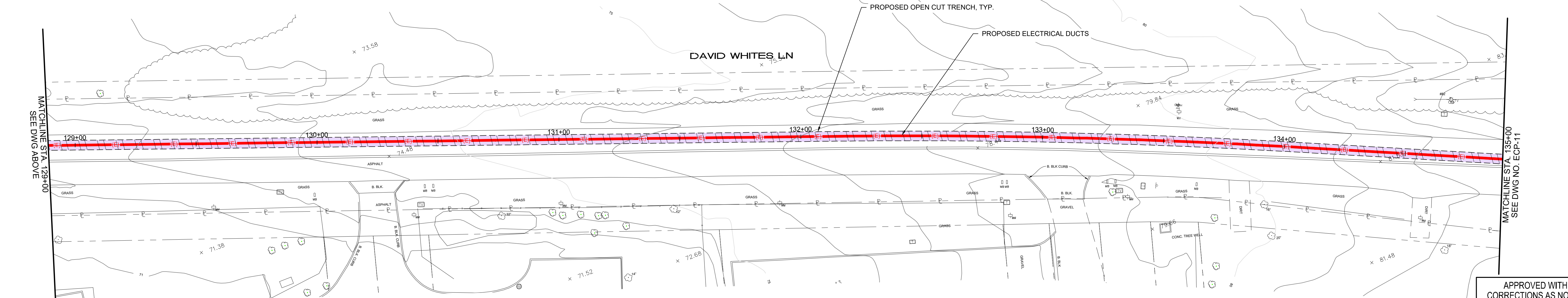
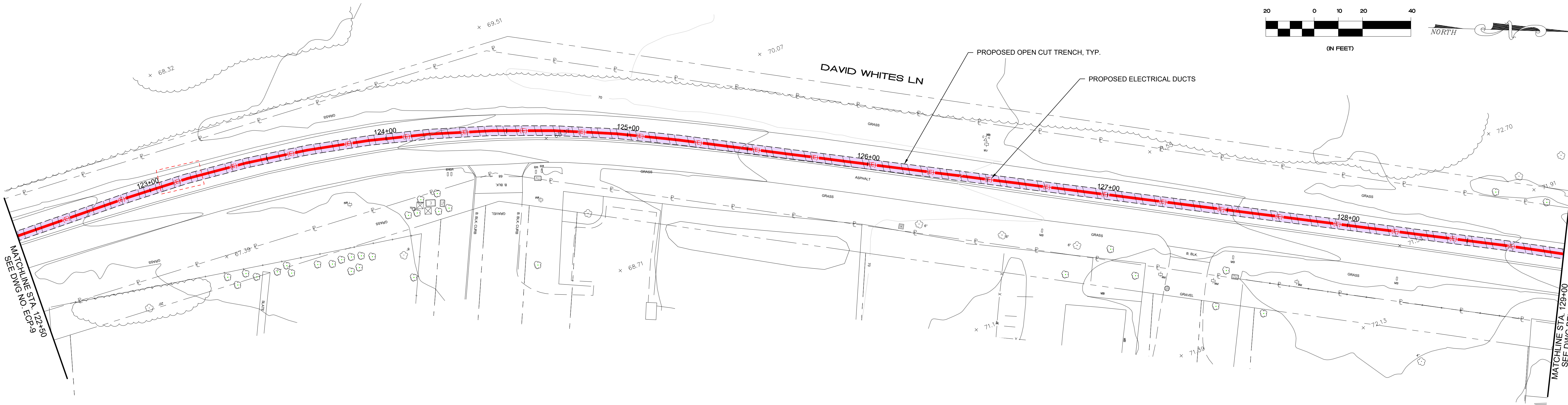
RESTORATION NOTES

NOTE A
RESTORE DISTURBED AREA WITH TOPSOIL AND SEED

NOTE B
TEMPORARY ASPHALT RESTORATION AND FINAL ASPHALT RESTORATION

PRELIMINARY - NOT FOR CONSTRUCTION

| | | | | | | | | | | | |
|--|--|-----------------------------|--|----------------|--|---------------|--|-----------------|--|----------------|--|
| 1 SEPT. 2025 REV | | PR. DESIG'S 9/25/25 DATE | | DSD DRAWING | | FRM REVIEW | | APP APPROVAL | | TEMP. DWG. NO. | |
| PROJECT NO. 250926-16-53 N 23033 DIR: G:\PROJECTS\23033\DWG\ROADWAY\23033_ECP_DWG_ECP-8 DST: AUTOCAD PDF (GENERAL DOCUMENTATION).PC3 PST: NAT_CAD. | | | | | | | | | | PROJECT NO. | |
| Nelson + Pope engineers - architects - surveyors 173 East Old Country Road Hicksville, New York 11801 TEL: 516.433.8800 WWW.NELSON-POPE.COM | | | | | | | | | | PROJECT NO. | |
| Long Island Power Authority SUFFOLK COUNTY, NY VILLAGE OF SOUTHAMPTON 138-KV TRANSMISSION LINE | | | | | | | | | | PROJECT NO. | |
| SOUTHAMPTON TO DEERFIELD 138-KV UNDERGROUND TRANSMISSION EROSION CONTROL PLAN - 8 | | | | | | | | | | PROJECT NO. | |
| PSEG LONG ISLAND 173 East Old Country Road Hicksville, New York | | | | | | | | | | PROJECT NO. | |
| SCALE: NONE | | | | | | | | | | PROJECT NO. | |
| DRAWING NO. UG-1000 | | | | | | | | | | PROJECT NO. | |
| SYSTEM GRID NUMBER | | | | | | | | | | PROJECT NO. | |
| CABINET NO. | | | | | | | | | | PROJECT NO. | |
| FOLDER NO. | | | | | | | | | | PROJECT NO. | |



LEGEND:

| | | | |
|--|--------------------------------|--|--|
| | PROPOSED CONCRETE WASHOUT | | PROPOSED OPEN CUT TRENCH |
| | PROPOSED ELECTRIC SPICE VAULT | | LIMIT OF IMPERIOUS DISTURBANCE |
| | PROPOSED SILT FENCE | | LIMIT OF PERMEABLE DISTURBANCE |
| | PROPOSED ELECTRICAL DUCTS | | LIMIT OF CLEARING + GRUBBING (PERMANENT) |
| | ALIGNMENT | | LIMIT OF CLEARING + GRUBBING (TEMPORARY) |
| | APPROXIMATE RIGHT-OF-WAY (ROW) | | |
| | FILTER BAG (INLET PROTECTION) | | |

IT IS A VIOLATION OF THE PROFESSIONAL LICENSE LAW FOR ANY PERSON TO ALTER THIS DRAWING IN ANY WAY, UNLESS ACTING UNDER THE DIRECTION OF A LICENSED PROFESSIONAL ENGINEER. THE ALTERING CONSULTANT SHALL AFFIX THEIR SEAL AND THE NOTATION "ALTERED BY" FOLLOWED BY THEIR SIGNATURE AND DATE OF ALTERATION.

RESTORATION NOTES

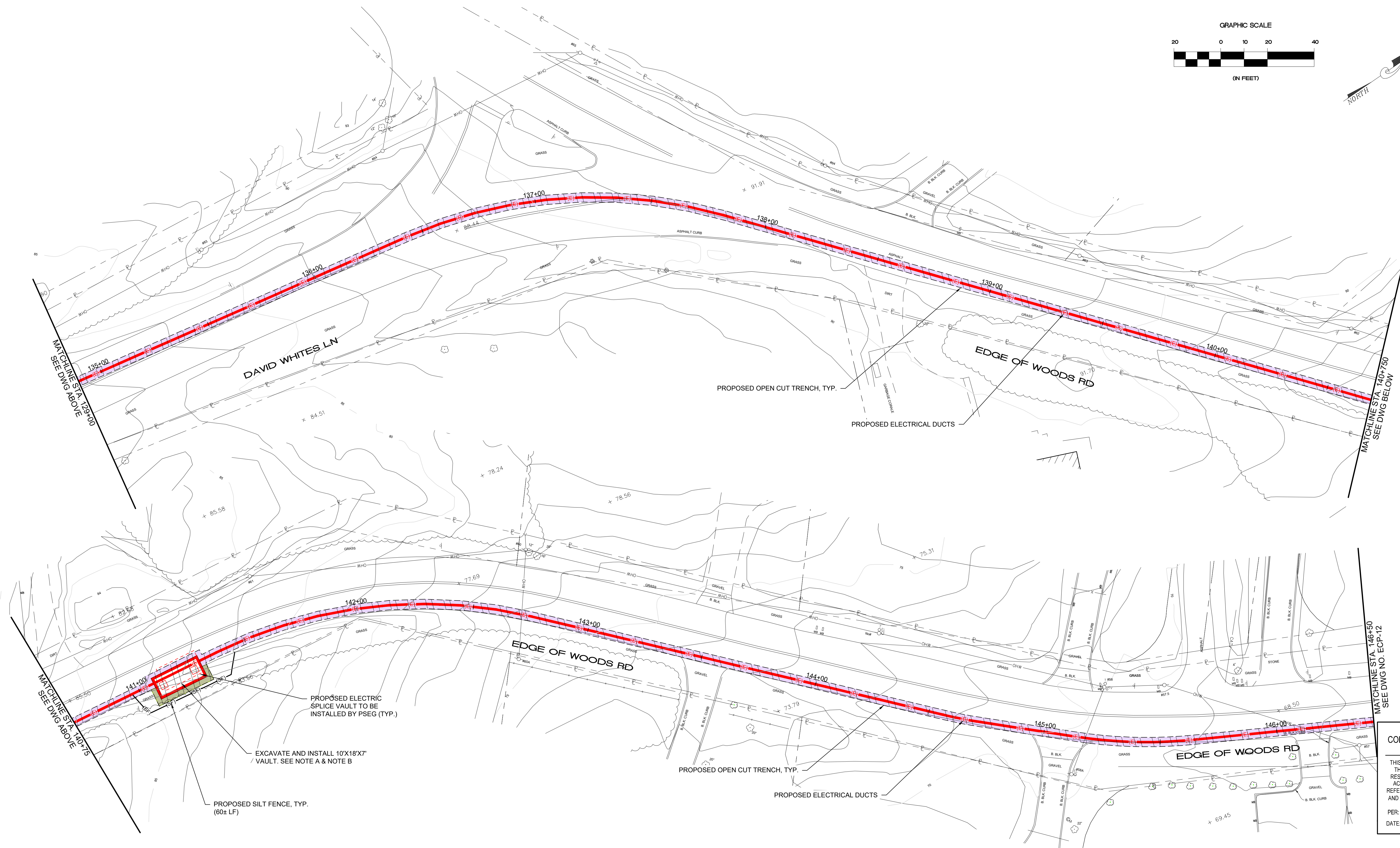
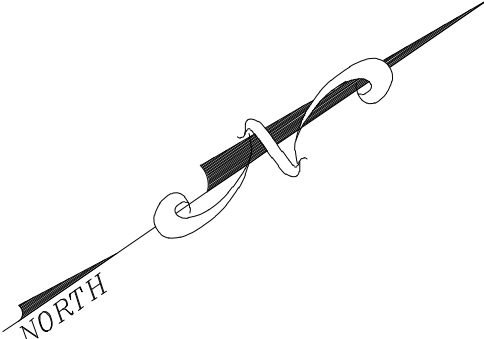
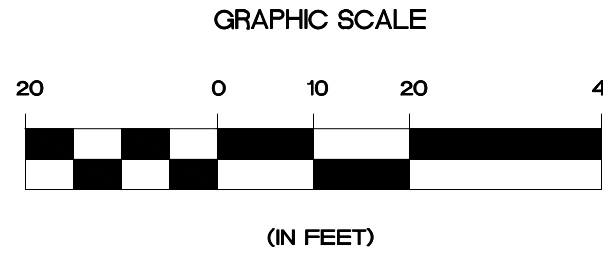
NOTE A
RESTORE DISTURBED AREA WITH TOPSOIL AND SEED

NOTE B
TEMPORARY ASPHALT RESTORATION AND FINAL ASPHALT RESTORATION

PRELIMINARY - NOT FOR CONSTRUCTION

| | | | |
|---------------------------|--|---|--|
| | | Long Island Power Authority SUFFOLK COUNTY, NY VILLAGE OF SOUTHAMPTON 138-KV TRANSMISSION LINE | |
| | | SOUTHAMPTON TO DEERFIELD 138-KV UNDERGROUND TRANSMISSION EROSION CONTROL PLAN - 10 | |
| | | | |
| 1 SEPT. 2025 REV. DATE | | PR. DESIGNED 9/25/25 DSD | |
| | | DR. REVIEWED 9/25/25 RPM | |
| | | APP. 9/25/25 --- | |
| PROJ. NO. | | SCALE | |
| | | NO. DATE W.O. DESCRIPTION | |
| | | OWN BY CKD BY REVIEWED APPD | |
| | | BAC UAC BAC BAC | |
| | | ISSUED FOR CONSTRUCTION | |
| DRAWING NO. UG-1000 | | VENDOR DWC NO. | |
| SYSTEM GRID NUMBER | | SMART NO. ECP-10 | |
| | | REVISION 000 | |
| | | CABINET NO. FOLDER NO. | |

A
B
C
D
E
F



APPROVED WITH
CORRECTIONS AS NOTED
PSEG Long Island

THIS APPROVAL SHALL NOT RELIEVE
THE CONTRACTOR FROM ENTIRE
RESPONSIBILITY FOR DIMENSIONAL
ACCURACY, CONFORMANCE WITH
REFERENCED SPECIFICATIONS, CODES
AND ALL LIABILITY UNDER CONTRACT.

PER: _____
DATE: _____

| LEGEND: | | |
|---------|--------------------------------|--|
| | PROPOSED CONCRETE WASHOUT | |
| | PROPOSED ELECTRIC SPICE VAULT | |
| | PROPOSED SILT FENCE | |
| | PROPOSED ELECTRICAL DUCTS | |
| | ALIGNMENT | |
| | APPROXIMATE RIGHT-OF-WAY (ROW) | |
| | FILTER BAG (INLET PROTECTION) | |

IT IS A VIOLATION OF THE PROFESSIONAL LICENSE LAW FOR ANY PERSON TO ALTER THIS DRAWING IN ANY WAY, UNLESS ACTING UNDER THE DIRECTION OF A LICENSED PROFESSIONAL ENGINEER. THE ALTERING CONSULTANT SHALL AFFIX THEIR SEAL AND THE NOTATION "ALTERED BY" FOLLOWED BY THEIR SIGNATURE AND DATE OF ALTERATION.

RESTORATION NOTES

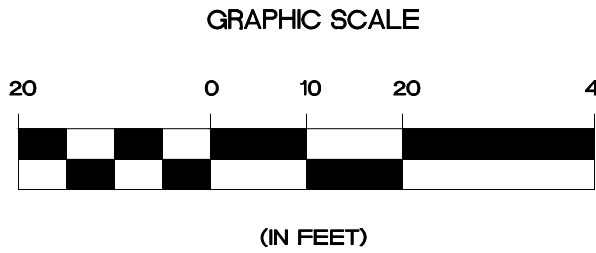
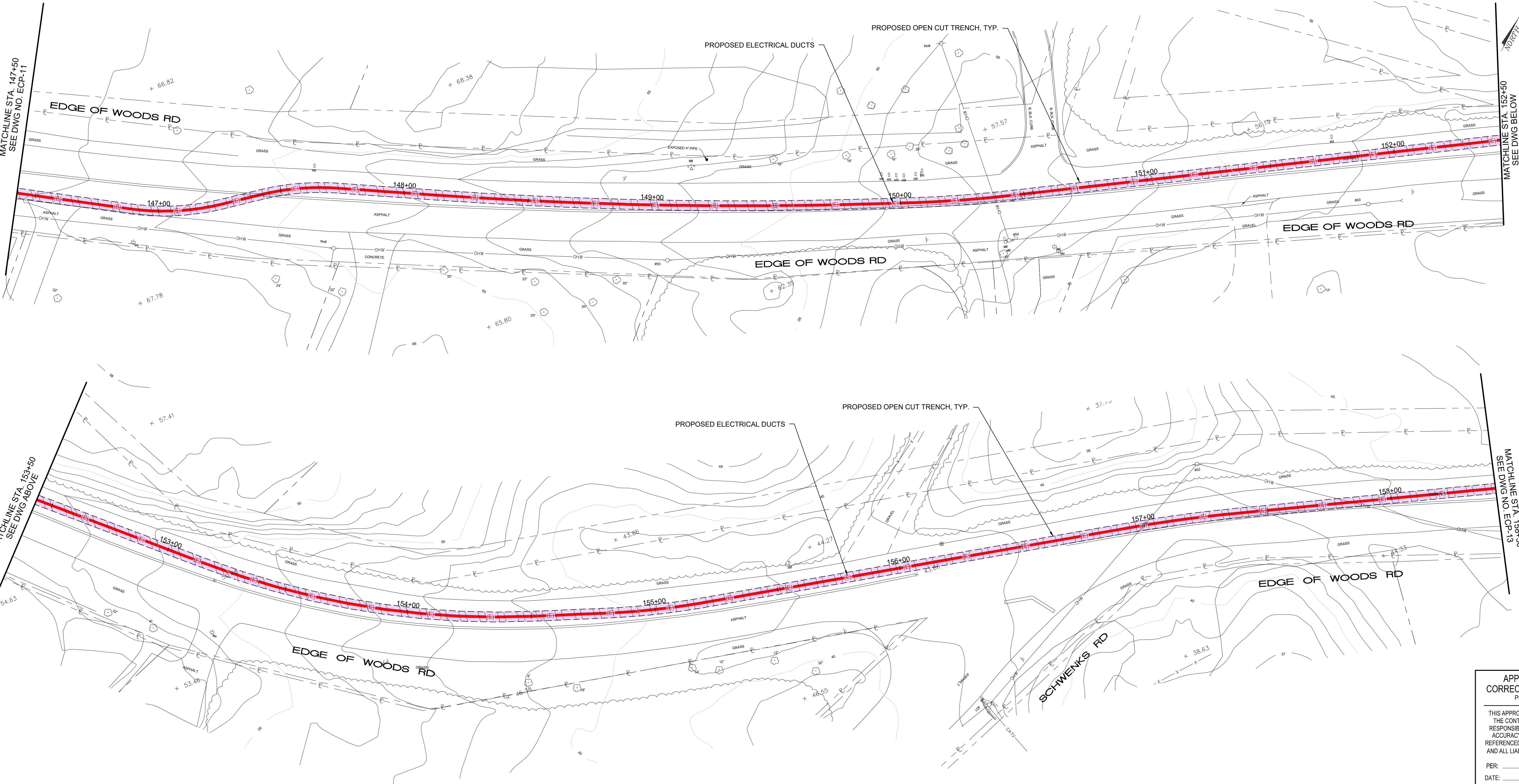
NOTE A
RESTORE DISTURBED AREA WITH TOPSOIL AND SEED

NOTE B
TEMPORARY ASPHALT RESTORATION AND FINAL ASPHALT RESTORATION

PRELIMINARY - NOT FOR CONSTRUCTION

| | | | | | | | | | | | | | |
|--|--|--|--|--|--|--|--|--|--|---|--|--|--|
| | | | | | | | | | | Long Island Power Authority SUFFOLK COUNTY, NY VILLAGE OF SOUTHAMPTON 138-KV TRANSMISSION LINE | | | |
| | | | | | | | | | | SOUTHAMPTON TO DEERFIELD 138-KV UNDERGROUND TRANSMISSION EROSION CONTROL PLAN - 11 | | | |
| | | | | | | | | | | | | | |
| | | | | | | | | | | SCALE: NONE | | | |
| | | | | | | | | | | DRAWING NO. UG-1000 | | | |
| | | | | | | | | | | ECP-11 | | | |
| | | | | | | | | | | REVISION 000 | | | |
| | | | | | | | | | | CABINET NO. FOLDER NO. | | | |

A
B
C
D
E
F



LEGEND:

| | | | |
|--|--------------------------------|--|---|
| | PROPOSED CONCRETE WASHOUT | | PROPOSED OPEN CUT TRENCH |
| | PROPOSED ELECTRIC SPICE VAULT | | LIMIT OF IMPERIOUS DISTURBANCE |
| | PROPOSED SILT FENCE | | LIMIT OF PERMEABLE DISTURBANCE |
| | PROPOSED ELECTRICAL DUCTS | | LIMIT OF CLEARING + GRUBBING TREE REMOVAL (PERMANENT) |
| | ALIGNMENT | | LIMIT OF CLEARING + GRUBBING (TEMPORARY) |
| | APPROXIMATE RIGHT-OF-WAY (ROW) | | |
| | FILTER BAG (INLET PROTECTION) | | |

IT IS A VIOLATION OF THE PROFESSIONAL LICENSE LAW FOR ANY PERSON TO ALTER THIS DRAWING IN ANY WAY, UNLESS ACTING UNDER THE DIRECTION OF A LICENSED PROFESSIONAL ENGINEER. THE ALTERING CONSULTANT SHALL AFFIX THEIR SEAL AND THE NOTATION "ALTERED BY" FOLLOWED BY THEIR SIGNATURE AND DATE OF ALTERATION.

RESTORATION NOTES

NOTE A
RESTORE DISTURBED AREA WITH TOPSOIL AND SEED

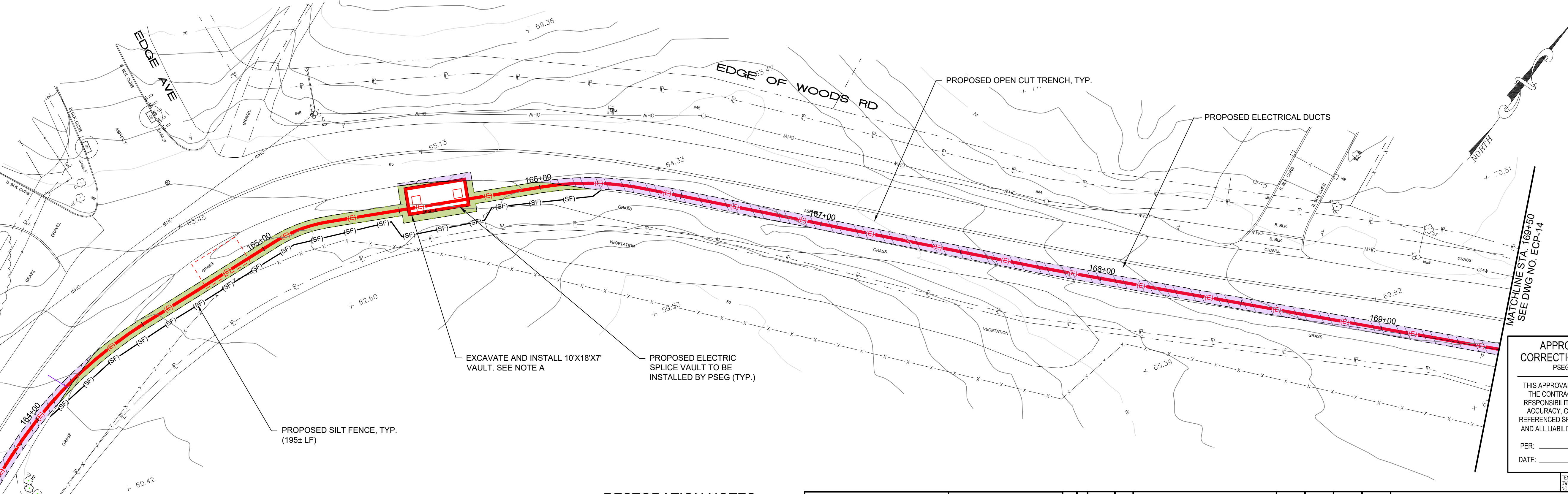
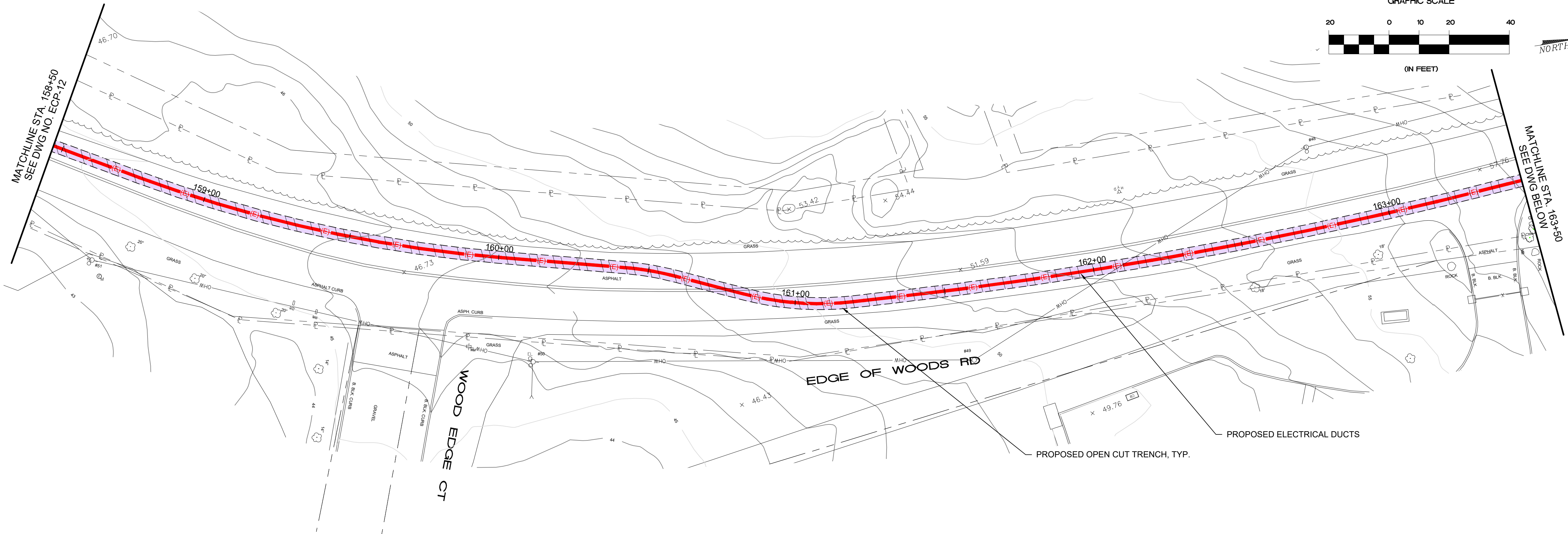
NOTE B
TEMPORARY ASPHALT RESTORATION AND FINAL ASPHALT RESTORATION

PRELIMINARY - NOT FOR CONSTRUCTION

| | | | | | | | | | | | |
|------------------------------------|--|--|--|--|--|--|--|--|--|--|--|
| | | | | | | | | | | | |
| engineers • architects • surveyors | | | | | | | | | | | |
| PROJ. NO. | | | | | | | | | | | |

| | | | | | | | | | |
|-------|--|--|--|--|--|--|--|--|--|
| ISSUE | | | | | | | | | |
| | | | | | | | | | |
| | | | | | | | | | |
| | | | | | | | | | |
| | | | | | | | | | |
| | | | | | | | | | |
| | | | | | | | | | |
| | | | | | | | | | |
| | | | | | | | | | |
| | | | | | | | | | |
| | | | | | | | | | |
| | | | | | | | | | |
| | | | | | | | | | |
| | | | | | | | | | |
| | | | | | | | | | |
| | | | | | | | | | |
| | | | | | | | | | |
| | | | | | | | | | |
| | | | | | | | | | |
| | | | | | | | | | |
| | | | | | | | | | |
| | | | | | | | | | |
| | | | | | | | | | |
| | | | | | | | | | |
| | | | | | | | | | |
| | | | | | | | | | |
| | | | | | | | | | |
| | | | | | | | | | |
| | | | | | | | | | |
| | | | | | | | | | |
| | | | | | | | | | |
| | | | | | | | | | |
| | | | | | | | | | |
| | | | | | | | | | |
| | | | | | | | | | |
| | | | | | | | | | |
| | | | | | | | | | |
| | | | | | | | | | |
| | | | | | | | | | |
| | | | | | | | | | |
| | | | | | | | | | |
| | | | | | | | | | |
| | | | | | | | | | |
| | | | | | | | | | |
| | | | | | | | | | |
| | | | | | | | | | |
| | | | | | | | | | |
| | | | | | | | | | |
| | | | | | | | | | |
| | | | | | | | | | |
| | | | | | | | | | |
| | | | | | | | | | |
| | | | | | | | | | |
| | | | | | | | | | |
| | | | | | | | | | |
| | | | | | | | | | |
| | | | | | | | | | |
| | | | | | | | | | |
| | | | | | | | | | |
| | | | | | | | | | |
| | | | | | | | | | |
| | | | | | | | | | |
| | | | | | | | | | |
| | | | | | | | | | |
| | | | | | | | | | |
| | | | | | | | | | |
| | | | | | | | | | |
| | | | | | | | | | |
| | | | | | | | | | |
| | | | | | | | | | |
| | | | | | | | | | |
| | | | | | | | | | |
| | | | | | | | | | |
| | | | | | | | | | |
| | | | | | | | | | |
| | | | | | | | | | |
| | | | | | | | | | |
| | | | | | | | | | |
| | | | | | | | | | |
| | | | | | | | | | |
| | | | | | | | | | |
| | | | | | | | | | |
| | | | | | | | | | |
| | | | | | | | | | |
| | | | | | | | | | |
| | | | | | | | | | |
| | | | | | | | | | |
| | | | | | | | | | |
| | | | | | | | | | |
| | | | | | | | | | |
| | | | | | | | | | |
| | | | | | | | | | |
| | | | | | | | | | |
| | | | | | | | | | |
| | | | | | | | | | |
| | | | | | | | | | |
| | | | | | | | | | |
| | | | | | | | | | |
| | | | | | | | | | |
| | | | | | | | | | |
| | | | | | | | | | |
| | | | | | | | | | |
| | | | | | | | | | |
| | | | | | | | | | |
| | | | | | | | | | |
| | | | | | | | | | |
| | | | | | | | | | |
| | | | | | | | | | |
| | | | | | | | | | |
| | | | | | | | | | |
| | | | | | | | | | |
| | | | | | | | | | |
| | | | | | | | | | |
| | | | | | | | | | |
| | | | | | | | | | |
| | | | | | | | | | |
| | | | | | | | | | |
| | | | | | | | | | |
| | | | | | | | | | |
| | | | | | | | | | |
| | | | | | | | | | |
| | | | | | | | | | |
| | | | | | | | | | |
| | | | | | | | | | |
| | | | | | | | | | |
| | | | | | | | | | |
| | | | | | | | | | |
| | | | | | | | | | |
| | | | | | | | | | |
| | | | | | | | | | |
| | | | | | | | | | |
| | | | | | | | | | |
| | | | | | | | | | |
| | | | | | | | | | |
| | | | | | | | | | |
| | | | | | | | | | |
| | | | | | | | | | |
| | | | | | | | | | |
| | | | | | | | | | |
| | | | | | | | | | |
| | | | | | | | | | |
| | | | | | | | | | |
| | | | | | | | | | |
| | | | | | | | | | |
| | | | | | | | | | |
| | | | | | | | | | |
| | | | | | | | | | |
| | | | | | | | | | |

A
B
C
D
E
F



LEGEND:

| | | | | | | | |
|--|-------------------------------|--|--|--|--------------------------------|--|--|
| | PROPOSED CONCRETE WASHOUT | | PROPOSED ELECTRIC SPLICE VAULT | | PROPOSED SILT FENCE | | PROPOSED ELECTRICAL DUCTS |
| | PROPOSED SILT FENCE | | PROPOSED ELECTRICAL DUCTS | | ALIGNMENT | | APPROXIMATE RIGHT-OF-WAY (ROW) |
| | FILTER BAG (INLET PROTECTION) | | LIMIT OF IMPERIOUS DISTURBANCE | | LIMIT OF PERMEABLE DISTURBANCE | | LIMIT OF CLEARING + GRUBBING (PERMANENT) |
| | | | LIMIT OF CLEARING + GRUBBING (TEMPORARY) | | | | |

IT IS A VIOLATION OF THE PROFESSIONAL LICENSE LAW FOR ANY PERSON TO ALTER THIS DRAWING IN ANY WAY, UNLESS ACTING UNDER THE DIRECTION OF A LICENSED PROFESSIONAL ENGINEER. THE ALTERING CONSULTANT SHALL AFFIX THEIR SEAL AND THE NOTATION "ALTERED BY" FOLLOWED BY THEIR SIGNATURE AND DATE OF ALTERATION.

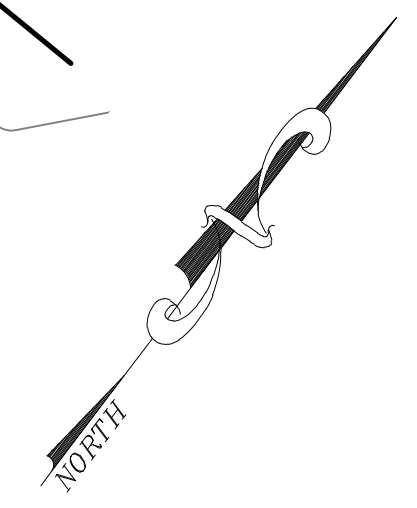
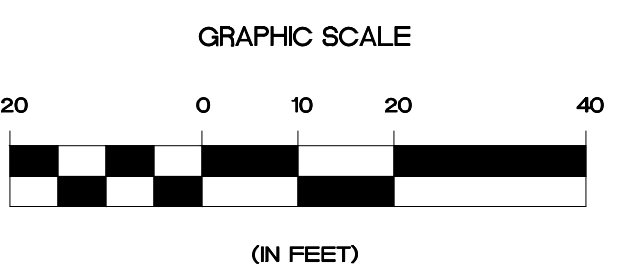
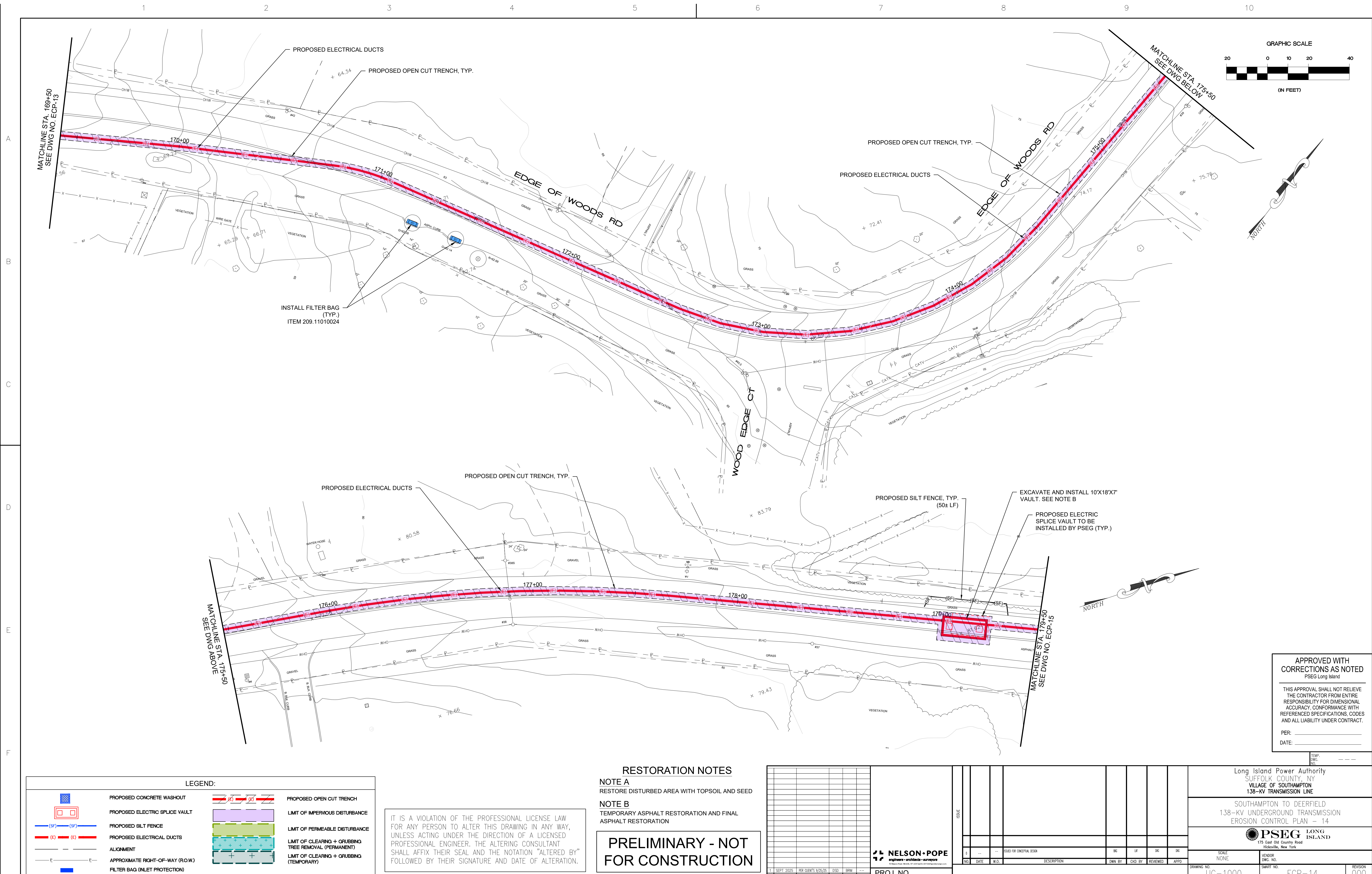
RESTORATION NOTES

NOTE A
RESTORE DISTURBED AREA WITH TOPSOIL AND SEED

NOTE B
TEMPORARY ASPHALT RESTORATION AND FINAL ASPHALT RESTORATION

PRELIMINARY - NOT FOR CONSTRUCTION

| | | | | | | | | | | | |
|---|--|------------|--|---------------------|--|-------|--|------------------|--|-------|--|
| 1 | | SEPT. 2025 | | PR. DESIGNS 9/25/25 | | DSD | | IRM | | --- | |
| REV. | | DATE | | DESCRIPTION | | DRAWN | | REVIEW | | APPR. | |
| PROJ. NO. | | | | | | | | | | | |
| Nelson-Pope engineers • architects • surveyors 173 East 104 County Road Hicksville, New York | | | | | | | | | | | |
| Long Island Power Authority SUFFOLK COUNTY, NY VILLAGE OF SOUTHAMPTON 138-KV TRANSMISSION LINE | | | | | | | | | | | |
| SOUTHAMPTON TO DEERFIELD 138-KV UNDERGROUND TRANSMISSION EROSION CONTROL PLAN - 13 | | | | | | | | | | | |
| PSEG LONG ISLAND 173 East 104 County Road Hicksville, New York | | | | | | | | | | | |
| SCALE: NONE | | | | VENDOR: NONE | | | | DWG. NO.: ECP-13 | | | |
| DRAWING NO.: UG-1000 | | | | SMART NO.: ECP-13 | | | | REVISION: 000 | | | |
| SYSTEM GRID: NUMBER | | | | CABINET NO. | | | | FOLDER NO. | | | |



LEGEND:

| | | | |
|--|--------------------------------|--|---|
| | PROPOSED CONCRETE WASHOUT | | PROPOSED OPEN CUT TRENCH |
| | PROPOSED ELECTRIC SPICE VAULT | | LIMIT OF IMPERVOUS DISTURBANCE |
| | PROPOSED SILT FENCE | | LIMIT OF PERMEABLE DISTURBANCE |
| | PROPOSED ELECTRICAL DUCTS | | LIMIT OF CLEARING + GRUBBING TREE REMOVAL (PERMANENT) |
| | ALIGNMENT | | LIMIT OF CLEARING + GRUBBING (TEMPORARY) |
| | APPROXIMATE RIGHT-OF-WAY (ROW) | | |
| | FILTER BAG (INLET PROTECTION) | | |

IT IS A VIOLATION OF THE PROFESSIONAL LICENSE LAW FOR ANY PERSON TO ALTER THIS DRAWING IN ANY WAY, UNLESS ACTING UNDER THE DIRECTION OF A LICENSED PROFESSIONAL ENGINEER. THE ALTERING CONSULTANT SHALL AFFIX THEIR SEAL AND THE NOTATION "ALTERED BY" FOLLOWED BY THEIR SIGNATURE AND DATE OF ALTERATION.

RESTORATION NOTES

NOTE A
RESTORE DISTURBED AREA WITH TOPSOIL AND SEED

NOTE B
TEMPORARY ASPHALT RESTORATION AND FINAL ASPHALT RESTORATION

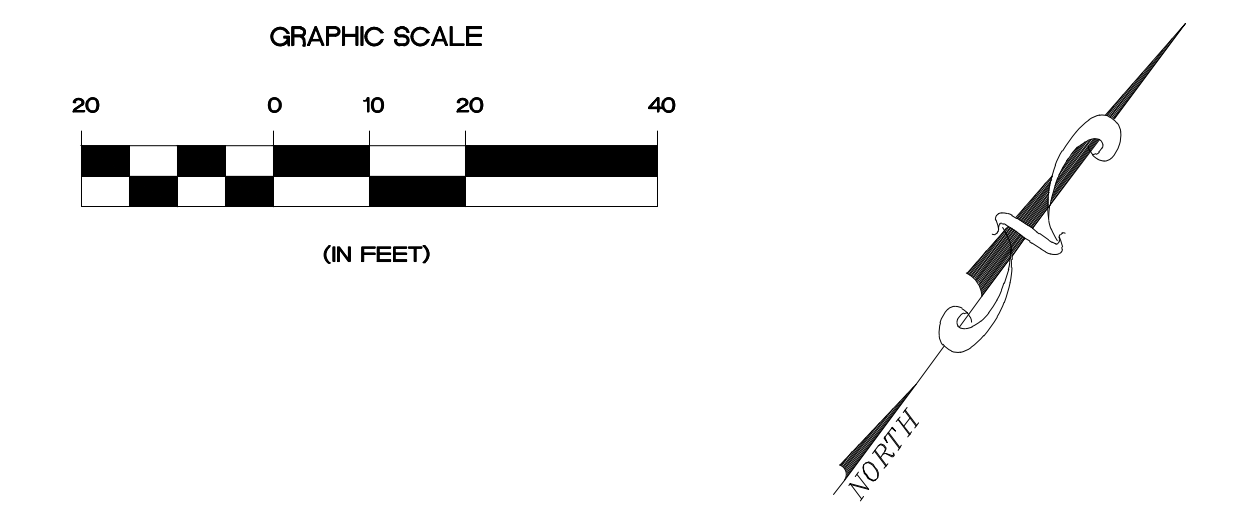
PRELIMINARY - NOT FOR CONSTRUCTION

| | | | |
|--|--|---|--|
| | | Long Island Power Authority SUFFOLK COUNTY, NY VILLAGE OF SOUTHAMPTON 138-KV TRANSMISSION LINE | |
| | | SOUTHAMPTON TO DEERFIELD 138-KV UNDERGROUND TRANSMISSION EROSION CONTROL PLAN - 14 | |
| | | | |
| 1 SEPT. 2025 REV. DATE | | PR. DES. 9/25/25 DSD. RM. -- DSD. RM. -- | |
| PROJECT NO. 250926-16-55 | | PROJECT DIR. G:\PROJECTS\23033\DWG\ROADWAY\23033_ECP.DWG_ECP-14 | |
| DST: AUTOCAD PDF (GENERAL DOCUMENTATION).PC3 | | PST: NAT_CAD. | |

| | | | | | | | |
|-----|------------|------------------|-------------|---------|---------|----------|--------|
| NO. | DATE | W.O. | DESCRIPTION | OWN. BY | CHK. BY | REVIEWED | APPRO. |
| 1 | SEPT. 2025 | PR. DES. 9/25/25 | DSD. RM. -- | | | | |

| | |
|---------------------|------------------|
| SCALE: NONE | VENDOR: DWS. NO. |
| DRAWING NO. UG-1000 | SMART NO. ECP-14 |
| SYSTEM: CRD. NUMBER | CABINET NO. |
| | FOLDER NO. |

REVISION: 000



| LEGEND: | | | |
|---------|--------------------------------|--|---|
| | PROPOSED CONCRETE WASHOUT | | PROPOSED OPEN CUT TRENCH |
| | PROPOSED ELECTRIC SPICE VAULT | | LIMIT OF IMPERIOUS DISTURBANCE |
| | PROPOSED SILT FENCE | | LIMIT OF PERMEABLE DISTURBANCE |
| | PROPOSED ELECTRICAL DUCTS | | LIMIT OF CLEARING + GRUBBING TREE REMOVAL (PERMANENT) |
| | ALIGNMENT | | LIMIT OF CLEARING + GRUBBING (TEMPORARY) |
| | APPROXIMATE RIGHT-OF-WAY (ROW) | | |
| | FILTER BAG (INLET PROTECTION) | | |

IT IS A VIOLATION OF THE PROFESSIONAL LICENSE LAW FOR ANY PERSON TO ALTER THIS DRAWING IN ANY WAY, UNLESS ACTING UNDER THE DIRECTION OF A LICENSED PROFESSIONAL ENGINEER. THE ALTERING CONSULTANT SHALL AFFIX THEIR SEAL AND THE NOTATION "ALTERED BY" FOLLOWED BY THEIR SIGNATURE AND DATE OF ALTERATION.

RESTORATION NOTES

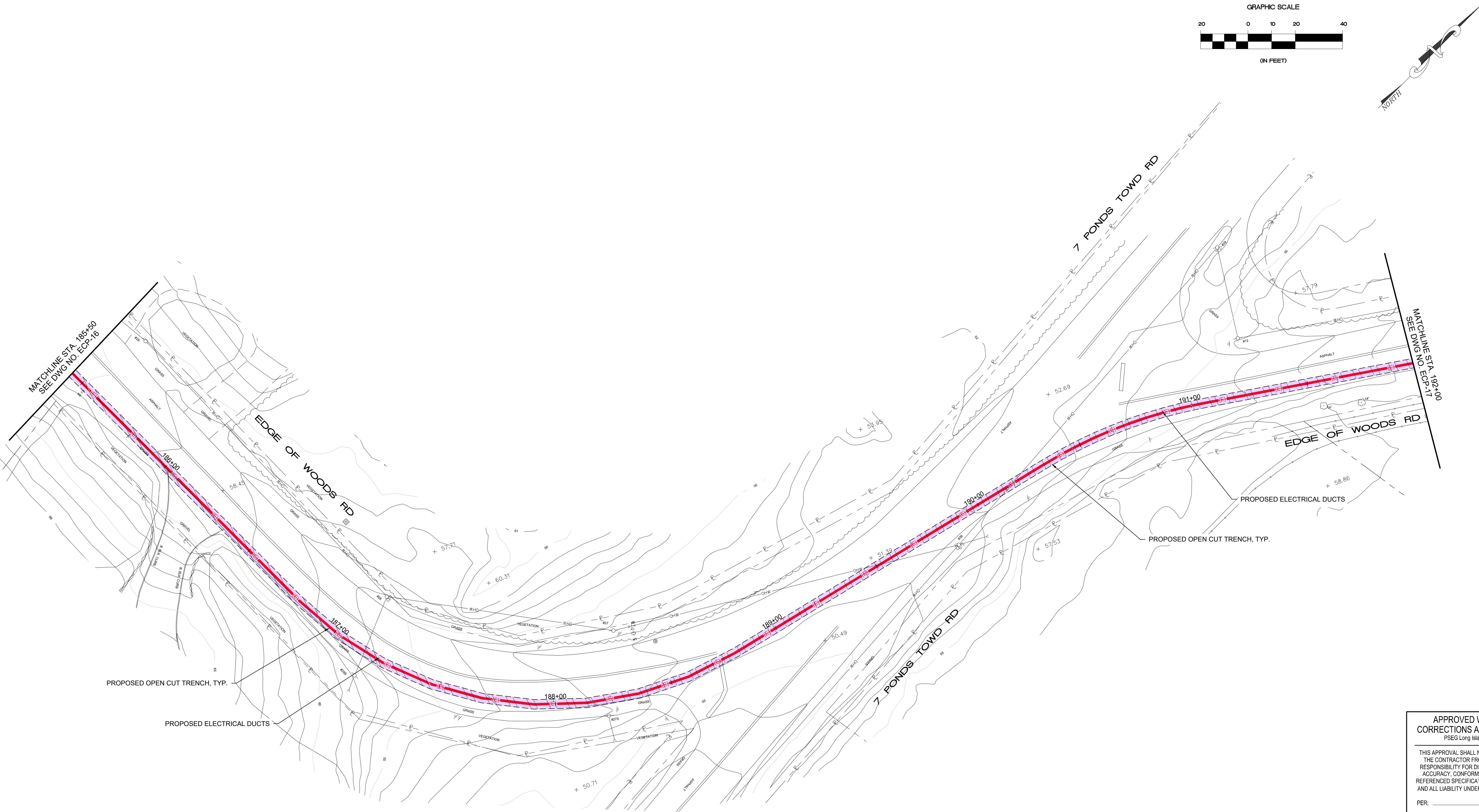
NOTE A
RESTORE DISTURBED AREA WITH TOPSOIL AND SEED

NOTE B
TEMPORARY ASPHALT RESTORATION AND FINAL ASPHALT RESTORATION

PRELIMINARY - NOT FOR CONSTRUCTION

| | | | | |
|---------------------|---|------------------|--|--|
| | Long Island Power Authority SUFFOLK COUNTY, NY VILLAGE OF SOUTHAMPTON 138-KV TRANSMISSION LINE | | | |
| | SOUTHAMPTON TO DEERFIELD 138-KV UNDERGROUND TRANSMISSION EROSION CONTROL PLAN - 15 | | | |
| | | | | |
| | 173 East Old Country Road Hicksville, New York | | | |
| SCALE: NONE | | VENDOR: ECP-15 | | |
| DRAWING NO. UG-1000 | | SMART NO. ECP-15 | | |
| SYSTEM GRID NUMBER | | CABINET NO. | | |
| | | FOLDER NO. | | |

A
B
C
D
E
F



LEGEND:

| | | | |
|--|--------------------------------|--|---|
| | PROPOSED CONCRETE WASHOUT | | PROPOSED OPEN CUT TRENCH |
| | PROPOSED ELECTRIC SPICE VAULT | | LIMIT OF IMPERVOUS DISTURBANCE |
| | PROPOSED SILT FENCE | | LIMIT OF PERMEABLE DISTURBANCE |
| | PROPOSED ELECTRICAL DUCTS | | LIMIT OF CLEARING + GRUBBING TREE REMOVAL (PERMANENT) |
| | ALIGNMENT | | LIMIT OF CLEARING + GRUBBING (TEMPORARY) |
| | APPROXIMATE RIGHT-OF-WAY (ROW) | | |
| | FILTER BAG (INLET PROTECTION) | | |

IT IS A VIOLATION OF THE PROFESSIONAL LICENSE LAW FOR ANY PERSON TO ALTER THIS DRAWING IN ANY WAY, UNLESS ACTING UNDER THE DIRECTION OF A LICENSED PROFESSIONAL ENGINEER. THE ALTERING CONSULTANT SHALL AFFIX THEIR SEAL AND THE NOTATION "ALTERED BY" FOLLOWED BY THEIR SIGNATURE AND DATE OF ALTERATION.

RESTORATION NOTES

NOTE A
RESTORE DISTURBED AREA WITH TOPSOIL AND SEED

NOTE B
TEMPORARY ASPHALT RESTORATION AND FINAL ASPHALT RESTORATION

PRELIMINARY - NOT FOR CONSTRUCTION

| | | | | | | | | | | | | | | | | | | | | | | | | | | | | | |
|-----|--|------------|--|---------------------|--|-------------|--|---------|--|----------|--|-------------|--|------------------------------------|--|--|--|---|--|--|--|------------------|--|-------------|--|--------------------------|--|---------------|--|
| 1 | | SEPT. 2025 | | PR. DESIGNS 9/25/25 | | DSD | | RRM | | --- | | Nelson-Pope | | engineers • architects • surveyors | | 173 East 10th County Road Hicksville, New York | | Long Island Power Authority SUFFOLK COUNTY, NY VILLAGE OF SOUTHAMPTON 138-KV TRANSMISSION LINE | | SOUTHAMPTON TO DEERFIELD 138-KV UNDERGROUND TRANSMISSION EROSION CONTROL PLAN - 16 | | PSEG LONG ISLAND | | SCALE: NONE | | VENDOR: SMART NO. ECP-16 | | REVISION: 000 | |
| NO. | | DATE | | W.D. | | DESCRIPTION | | OWN. BY | | CHKD. BY | | REVIEWED | | APPRO. | | DRAWING NO. UG-1000 | | SMART NO. ECP-16 | | FOLDER NO. | | | | | | | | | |

1 SEPT. 2025 PR. DESIGNS 9/25/25 DSD RRM --- Nelson-Pope engineers • architects • surveyors 173 East 10th County Road Hicksville, New York

Long Island Power Authority
SUFFOLK COUNTY, NY
VILLAGE OF SOUTHAMPTON
138-KV TRANSMISSION LINE

SOUTHAMPTON TO DEERFIELD
138-KV UNDERGROUND TRANSMISSION
EROSION CONTROL PLAN - 16

PSEG LONG ISLAND
173 East 10th County Road
Hicksville, New York

SCALE: NONE

VENDOR: SMART NO. ECP-16

REVISION: 000

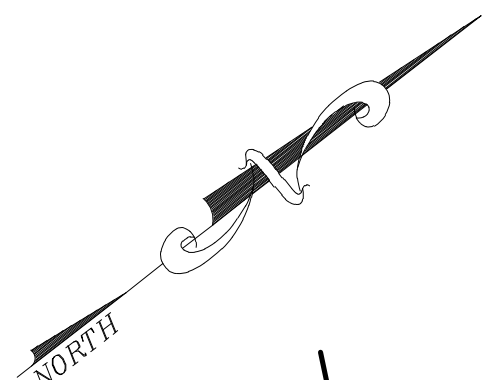
DRAWING NO. UG-1000

SMART NO. ECP-16

FOLDER NO.

SYSTEM GRID NUMBER

CABINET NO.

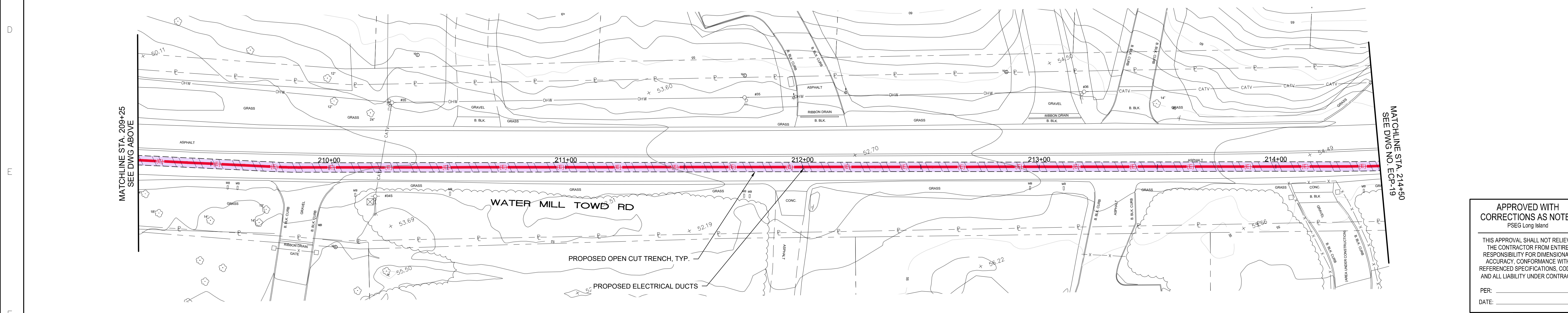
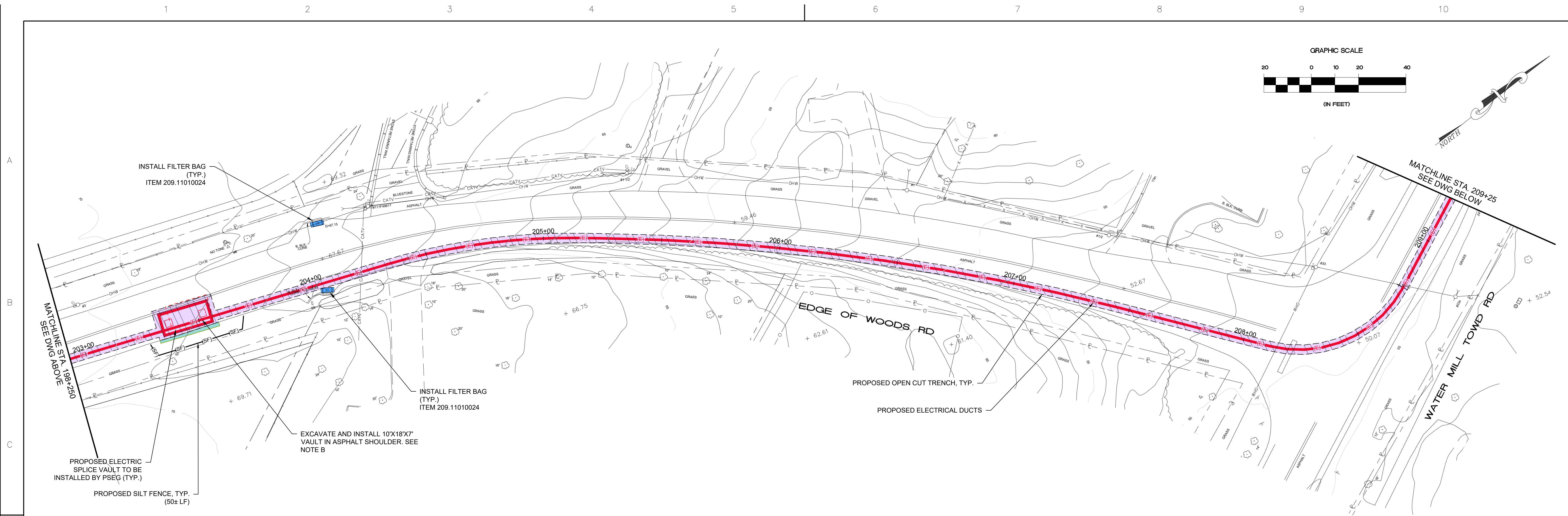


LEGEND:

PRELIMINARY - NOT
FOR CONSTRUCTION

PRELIMINARY - NOT
FOR CONSTRUCTION

PDT: 250926-16:55 | № 23033 DIR: G:\PROJECTS\23033\DWG\ROADWAY\23033 ECP.DWG ECP-17 | DST: AUTOCAD PDF (GENERAL DOCUMENTATION).PC3 | PST: NAT CAD



LEGEND:

| | | | |
|--|--------------------------------|--|--|
| | PROPOSED CONCRETE WASHOUT | | PROPOSED OPEN CUT TRENCH |
| | PROPOSED ELECTRIC SPLICE VAULT | | LIMIT OF IMPERIOUS DISTURBANCE |
| | PROPOSED SILT FENCE | | LIMIT OF PERMEABLE DISTURBANCE |
| | PROPOSED ELECTRICAL DUCTS | | LIMIT OF CLEARING + GRUBBING TREE REMOVAL (PERMANENT) |
| | ALIGNMENT | | LIMIT OF CLEARING + GRUBBING FILTER BAG (INLET PROTECTION) |
| | APPROXIMATE RIGHT-OF-WAY (ROW) | | |
| | FILTER BAG (INLET PROTECTION) | | |

IT IS A VIOLATION OF THE PROFESSIONAL LICENSE LAW FOR ANY PERSON TO ALTER THIS DRAWING IN ANY WAY, UNLESS ACTING UNDER THE DIRECTION OF A LICENSED PROFESSIONAL ENGINEER. THE ALTERING CONSULTANT SHALL AFFIX THEIR SEAL AND THE NOTATION "ALTERED BY" FOLLOWED BY THEIR SIGNATURE AND DATE OF ALTERATION.

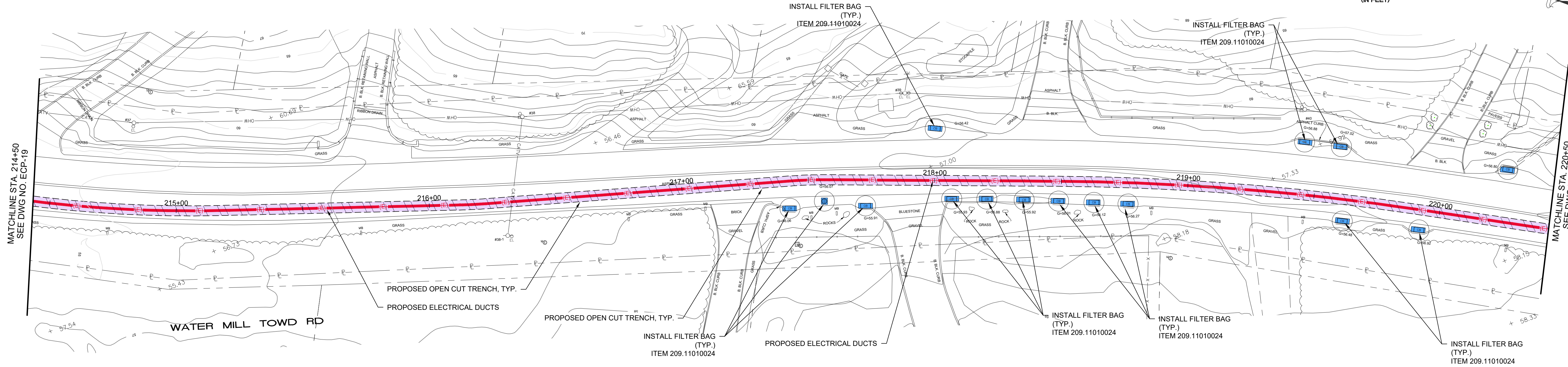
RESTORATION NOTES

NOTE A
RESTORE DISTURBED AREA WITH TOPSOIL AND SEED

NOTE B
TEMPORARY ASPHALT RESTORATION AND FINAL ASPHALT RESTORATION

PRELIMINARY - NOT FOR CONSTRUCTION

| | | | |
|---|--|---|--|
| | | Long Island Power Authority SUFFOLK COUNTY, NY VILLAGE OF SOUTHAMPTON 138-KV TRANSMISSION LINE | |
| | | SOUTHAMPTON TO DEERFIELD 138-KV UNDERGROUND TRANSMISSION EROSION CONTROL PLAN - 18 | |
| | | | |
| 1 SEPT 2025 REV DATE DESCRIPTION DRAWN REVIEW APPR | | SCALE: NONE | |
| PROJ. NO. | | DRAWING NO. UG-1000 | |
| | | VENDOR: ECP-18 | |
| | | REVISION: 000 | |
| | | CABINET NO. | |
| | | FOLDER NO. | |



RESTORATION NOTES

NOTE A
RESTORE DISTURBED AREA WITH TOPSOIL AND SEED

NOTE B
TEMPORARY ASPHALT RESTORATION AND FINAL ASPHALT RESTORATION

PRELIMINARY - NOT
FOR CONSTRUCTION

A

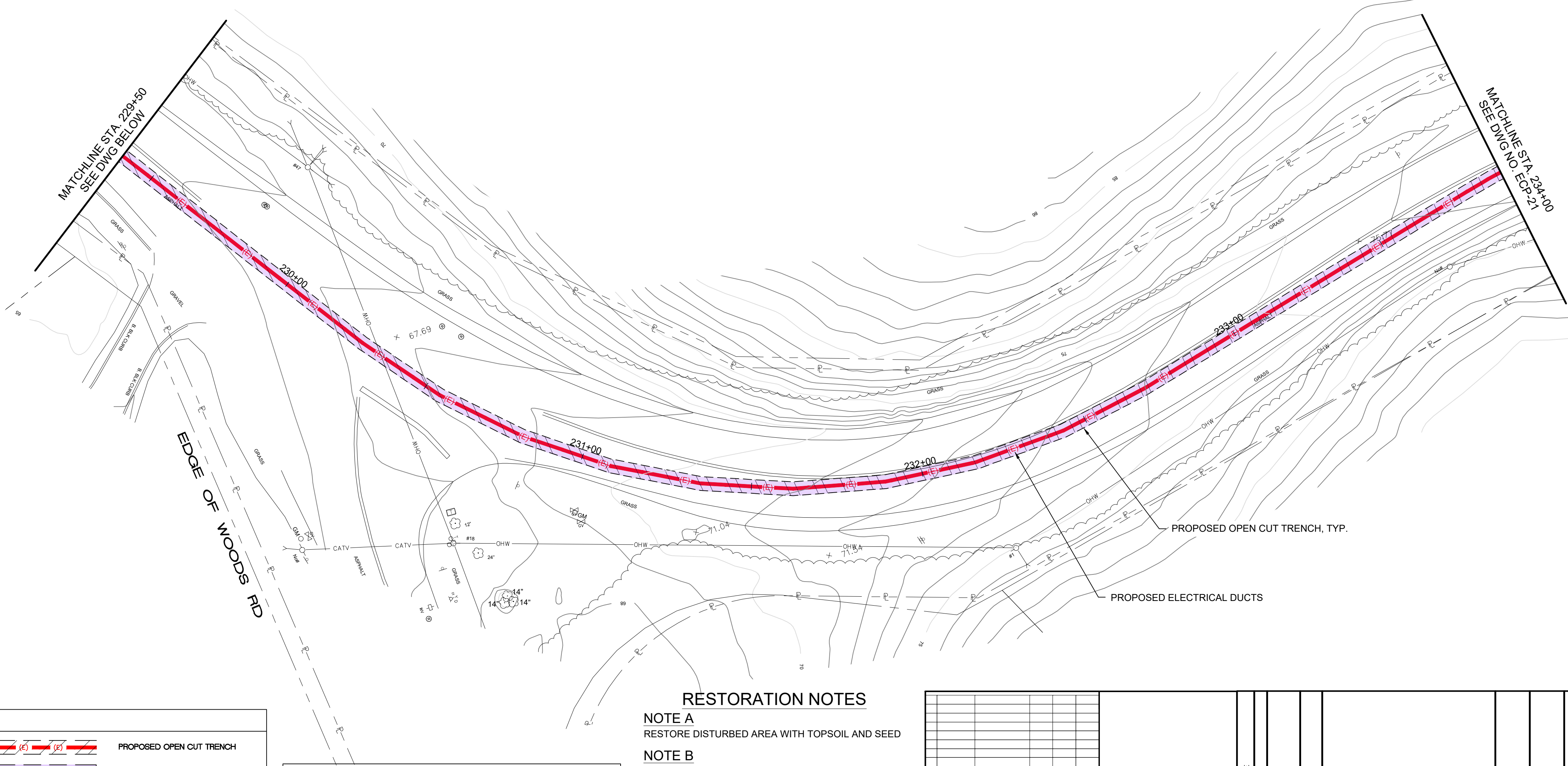
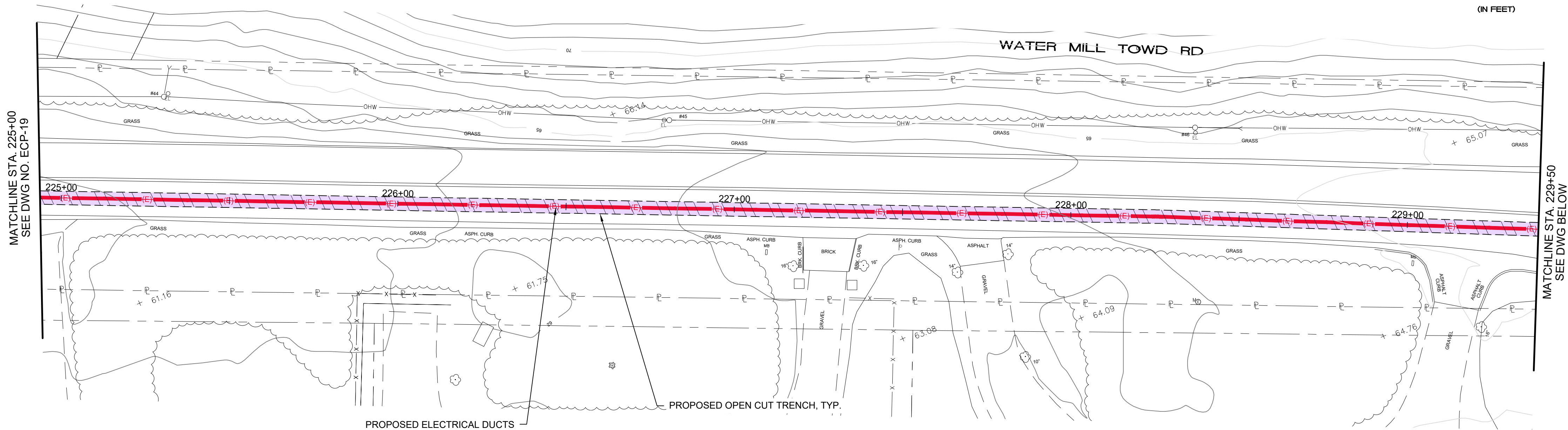
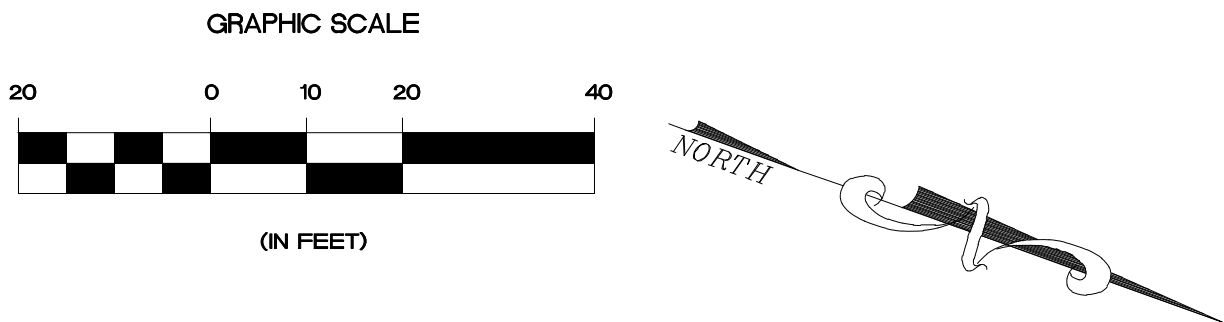
B

C

D

E

F



APPROVED WITH
CORRECTIONS AS NOTED

PSEG Long Island

THIS APPROVAL SHALL NOT RELIEVE
THE CONTRACTOR FROM ENTIRE
RESPONSIBILITY FOR DIMENSIONAL
ACCURACY, CONFORMANCE WITH
REFERENCED SPECIFICATIONS, CODES
AND ALL LIABILITY UNDER CONTRACT.

PER: _____

DATE: _____

TEMP.
DWG.
NO.:

LEGEND:

| | | | | | | | | | | | | | |
|--|---------------------------|--|--------------------------------|--|--------------------------------|--|---|--|--|--|--------------------------------|--|-------------------------------|
| | PROPOSED CONCRETE WASHOUT | | PROPOSED ELECTRIC SPICE VAULT | | PROPOSED SILT FENCE | | PROPOSED ELECTRICAL DUCTS | | ALIGNMENT | | APPROXIMATE RIGHT-OF-WAY (ROW) | | FILTER BAG (INLET PROTECTION) |
| | PROPOSED OPEN CUT TRENCH | | LIMIT OF IMPERVOUS DISTURBANCE | | LIMIT OF PERMEABLE DISTURBANCE | | LIMIT OF CLEARING + GRUBBING TREE REMOVAL (PERMANENT) | | LIMIT OF CLEARING + GRUBBING (TEMPORARY) | | | | |

IT IS A VIOLATION OF THE PROFESSIONAL LICENSE LAW FOR ANY PERSON TO ALTER THIS DRAWING IN ANY WAY, UNLESS ACTING UNDER THE DIRECTION OF A LICENSED PROFESSIONAL ENGINEER. THE ALTERING CONSULTANT SHALL AFFIX THEIR SEAL AND THE NOTATION "ALTERED BY" FOLLOWED BY THEIR SIGNATURE AND DATE OF ALTERATION.

RESTORATION NOTES

NOTE A
RESTORE DISTURBED AREA WITH TOPSOIL AND SEED

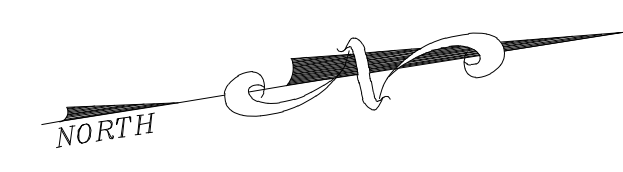
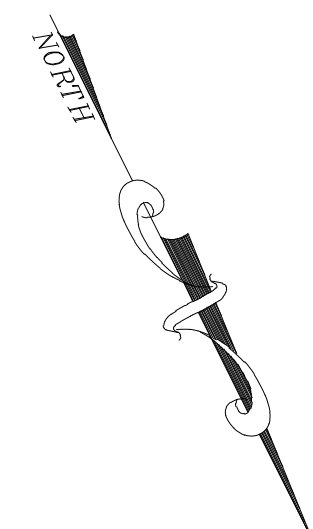
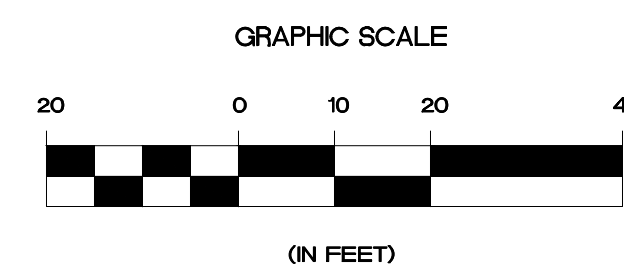
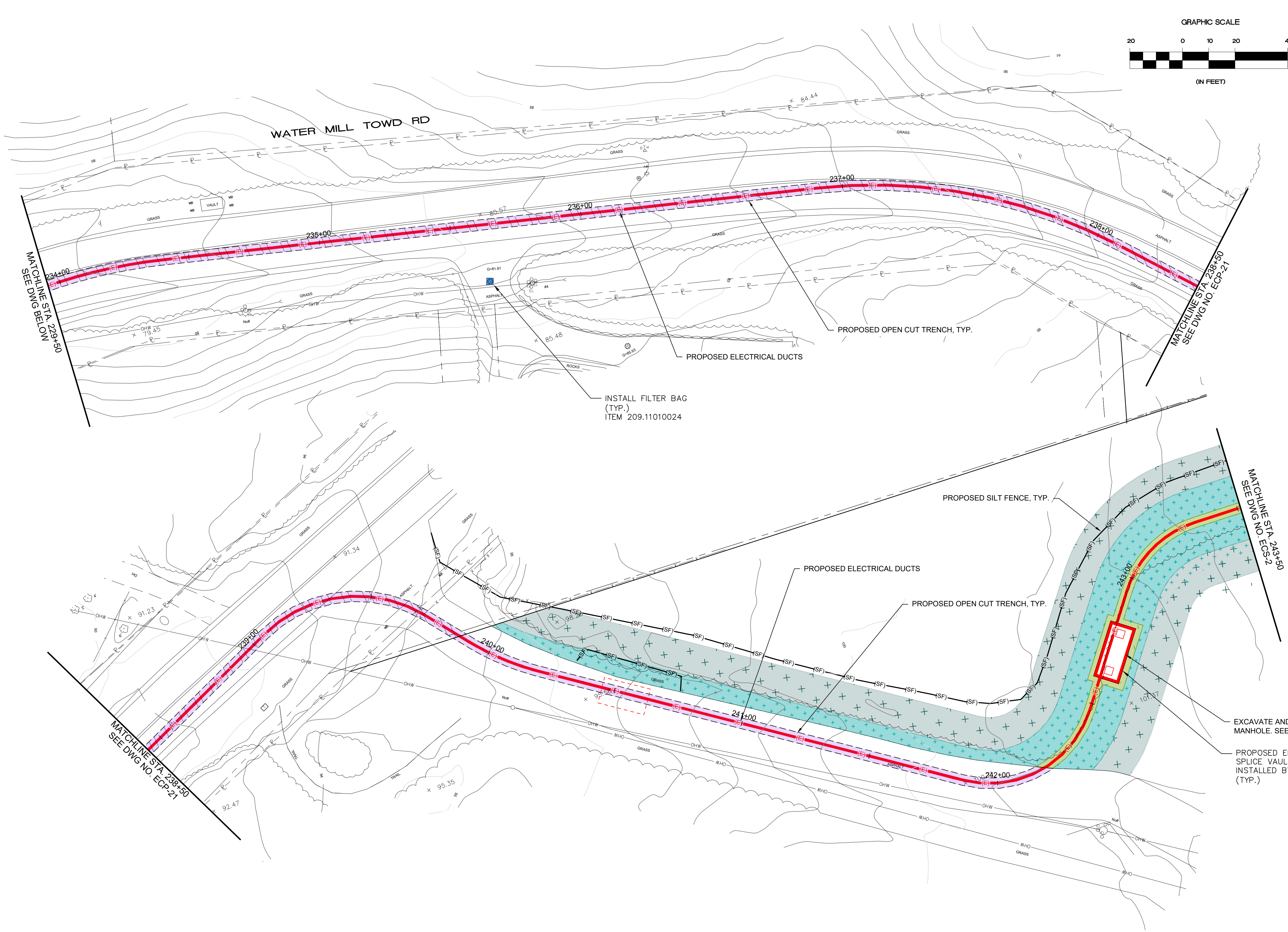
NOTE B
TEMPORARY ASPHALT RESTORATION AND FINAL ASPHALT RESTORATION

PRELIMINARY - NOT FOR CONSTRUCTION

| | | | | | | | | | | | |
|---|--|--|--|--|--|--|--|---|--|--|--|
| Long Island Power Authority SUFFOLK COUNTY, NY VILLAGE OF SOUTHAMPTON 138-KV TRANSMISSION LINE | | | | SOUTHAMPTON TO DEERFIELD 138-KV UNDERGROUND TRANSMISSION EROSION CONTROL PLAN - 20 | | | | PSEG LONG ISLAND 173 East Old Country Road Hicksville, New York | | | |
| SCALE: NONE | | | | VENDOR: SMART NO. ECP-20 | | | | REVISION: 000 | | | |
| DRAWING NO. UG-1000 | | | | SYSTEM GRID NUMBER | | | | CABINET NO. | | | |
| FOLDER NO. | | | | | | | | | | | |

A
B
C
D
E
F

1 2 3 4 5 6 7 8 9 10



LEGEND:

| | | | |
|--|--------------------------------|--|---|
| | PROPOSED CONCRETE WASHOUT | | PROPOSED OPEN CUT TRENCH |
| | PROPOSED ELECTRIC SPICE VAULT | | LIMIT OF IMPERIOUS DISTURBANCE |
| | PROPOSED SILT FENCE | | LIMIT OF PERMEABLE DISTURBANCE |
| | PROPOSED ELECTRICAL DUCTS | | LIMIT OF CLEARING + GRUBBING TREE REMOVAL (PERMANENT) |
| | ALIGNMENT | | LIMIT OF CLEARING + GRUBBING (TEMPORARY) |
| | APPROXIMATE RIGHT-OF-WAY (ROW) | | |
| | FILTER BAG (INLET PROTECTION) | | |

IT IS A VIOLATION OF THE PROFESSIONAL LICENSE LAW FOR ANY PERSON TO ALTER THIS DRAWING IN ANY WAY, UNLESS ACTING UNDER THE DIRECTION OF A LICENSED PROFESSIONAL ENGINEER. THE ALTERING CONSULTANT SHALL AFFIX THEIR SEAL AND THE NOTATION "ALTERED BY" FOLLOWED BY THEIR SIGNATURE AND DATE OF ALTERATION.

RESTORATION NOTES

NOTE A
RESTORE DISTURBED AREA WITH TOPSOIL AND SEED

NOTE B
TEMPORARY ASPHALT RESTORATION AND FINAL ASPHALT RESTORATION

PRELIMINARY - NOT FOR CONSTRUCTION

| | | | |
|------------------------------------|--|---|--|
| | | Long Island Power Authority SUFFOLK COUNTY, NY VILLAGE OF SOUTHAMPTON 138-KV TRANSMISSION LINE | |
| 1 SEPT. 2025 REV. DATE | | SOUTHAMPTON TO DEERFIELD 138-KV UNDERGROUND TRANSMISSION EROSION CONTROL PLAN - 21 | |
| PR. DESIGNS 9/25/25 DESCRIPTION | | | |
| DSD DRAWING | | 173 East Old Country Road Hicksville, New York | |
| FRM REVIEW | | SCALE NONE | |
| APP. DATE | | VENDOR DWC. NO. | |
| PROJ. NO. | | DRAWING NO. UG-1000 | |
| | | SMART NO. ECP-21 | |
| | | REVISION 000 | |
| | | SYSTEM GRID NUMBER | |
| | | CABINET NO. | |
| | | FOLDER NO. | |

APPROVED WITH CORRECTIONS AS NOTED
PSEG Long Island

THIS APPROVAL SHALL NOT RELIEVE THE CONTRACTOR FROM ENTIRE RESPONSIBILITY FOR DIMENSIONAL ACCURACY, CONFORMANCE WITH REFERENCED SPECIFICATIONS, CODES AND ALL LIABILITY UNDER CONTRACT.

PER: _____
DATE: _____